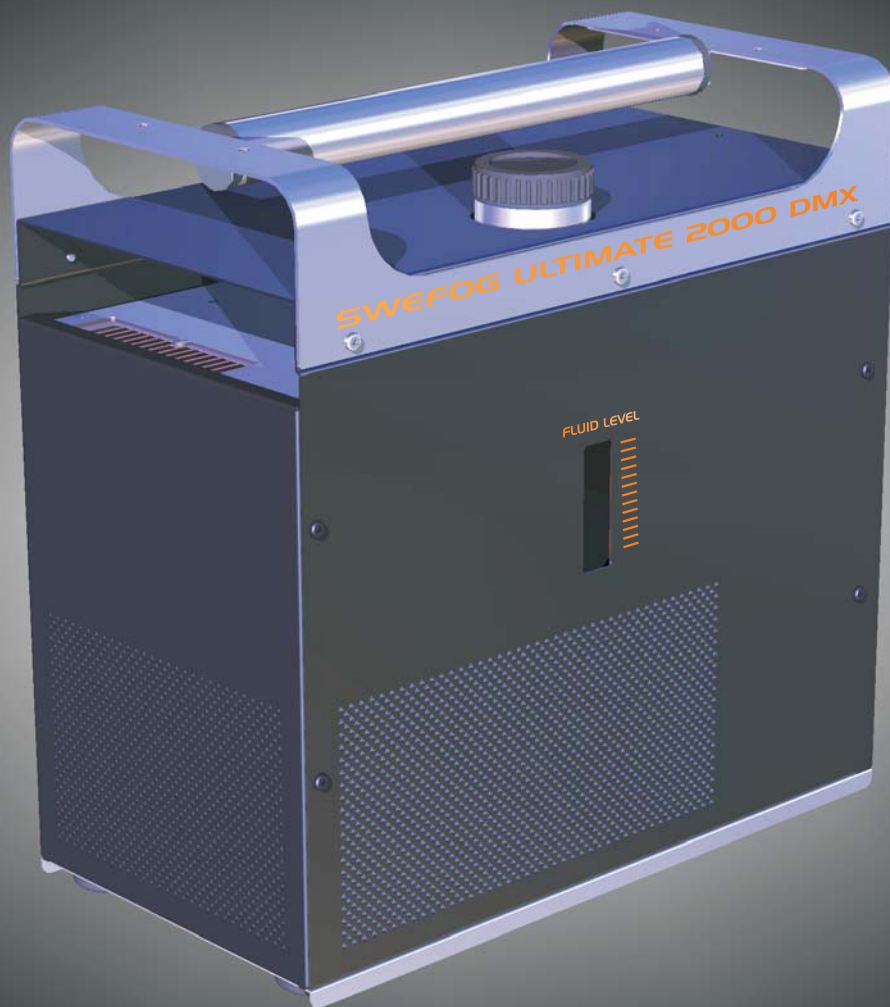


'2007 NEW MODEL PRODUCT PREVIEW

ULTIMATE 2000 DMX



PRESENTING THE ALL-NEW SWefog ULTIMATE 2000. CRAFTED WITH PRECISION AND FINESSE, IT SETS A NEW STANDARD FOR ATMOSPHERIC HAZERS. ULTIMATE 2000 COMES FULLY LOADED WITH INTEGRATED DMX 512 AS STANDARD, AND FULLY INTEGRATED W-DMX AVAILABLE AS AN OPTION.

ULTIMATE 2000 REPLACES THE LEGENDARY ULTIMATE 200, THE PROFESSIONAL'S FIRST CHOICE SINCE 1998.

IN EVERY SENSE, ULTIMATE 2000 IS TRULY A NEW HAZER. IT FEATURES SWefog'S UNBEATED RELIABILITY, HEAVY-DUTY INDUSTRIAL NON-COMPROMISE PRECISION COMPONENTS AND CREATES THE SAFEST, CLEANEST NON-GLYCOL HAZE WITH 3+ HOURS HANG TIME. INSTANT ON, NO WARM-UP TIME, NO GLYCOL, NO WATER, CONTINUOUS OPERATION.

COMPARED WITH ITS COMPETITORS, ULTIMATE 2000 IS THE MOST ECONOMICAL, MOST SERVICE-FRIENDLY, MOST APPRECIATED ATMOSPHERIC HAZER OFFERING THE HIGHEST OUTPUT.

HAND-CRAFTED IN SWEDEN.

SWefog
Technology Group AB

Östra Vägen 6
682 30 FILIPSTAD
Sweden
Tel: +46-590-122 50
Fax: +46-590-12209
sales@swefog.com
www.swefog.com

'2007 NEW MODEL PRODUCT PREVIEW

ULTIMATE 2000 DMX

- INSTANT ON, NO WARM-UP TIME, NO HEAT, NO GLYCOLS, NO WATER, NO SPIRITS.
- W-DMX (WIRELESS DMX) FULLY INTEGRATED AVAILABLE AS AN OPTION. FEATURES A CONTROL PANEL WITH RADIO SIGNAL LEVEL INDICATORS, STATUS AND LOG-ON BUTTON. DETACHABLE ANTENNA WITH PROTECTED ON-BOARD CONNECTOR.
- FULLY INTEGRATED DMX CONTROL, USES ONE CHANNEL ONLY. MANUAL OR DMX CONTROL MODE. ILLUMINATED LED DISPLAY, AUTO-STORE OF DMX CHANNEL, PERFECT FOR TOURING USE.
- EXTREMELY LOW FLUID CONSUMPTION, 0.05 LTR (0.01 US GAL) PER HOUR AT CONTINUOUS OPERATION.
- FEATURES A NEW AIR FILTER SYSTEM; IN & OUTLETS ARE PROTECTED WITH AN EASILY INTERCHANGEABLE FILTER MATERIAL, KEEPING INTERNAL PARTS CLEAN.
- NEW, ERGONOMIC HANDLE AND A PERFECT BALANCED DESIGN MAKES ULTIMATE 2000 FULLY PORTABLE.
- AVAILABLE IN 240V 50 HZ (CE) AND 115V 60 HZ (UL) VERSIONS.
- ON SALE: SEP-OCT 2006.



W-DMX

GO WIRELESS !

ULTIMATE 2000 IS AVAILABLE WITH A FULLY INTEGRATED ON-BOARD WIRELESS DMX SYSTEM.

THE RECEIVER IS FULLY COMPATIBLE WITH WIRELESS SOLUTION'S TRANSMITTERS AND CAN BE USED AS AN INTEGRATED RECEIVER IN A LARGE SYSTEM CONSISTING OF SEVERAL RECEIVERS, TRANSCIVERS, BOOSTERS AND REPEATERS.

READ MORE ABOUT THE W-DMX SYSTEM AT:
WWW.WIRELESSDMX.COM

 wireless
solution

Fully compatible

SWEF O G
Technology Group AB

Östra Vägen 6
682 30 FILIPSTAD
Sweden
Tel: +46-590-122 50
Fax: +46-590-12209
sales@swefog.com
www.swefog.com